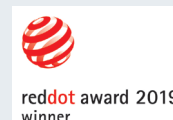
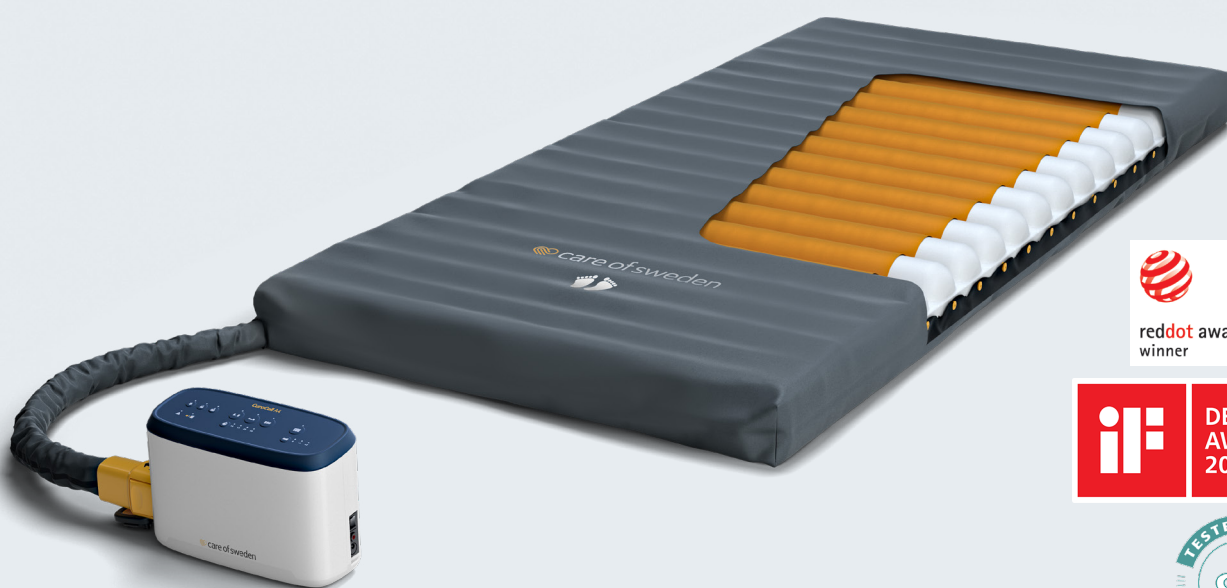


CuroCell® A4 CX10

An automatic mattress overlay system with a dynamic function and with good comfort and functionality



CuroCell® A4 CX10 with cover Stone

FACTS	OPTIONAL
<ul style="list-style-type: none"> • Type: dynamic mattress overlay system • Height: 10 cm • Recommended user weight: up to 200 kg • Input voltage: 100-240 V / 50-60 Hz • Sound level control unit, max: 17 dBA⁽²⁾, 35 dBA⁽⁶⁾ • Warranty: 2 years • PVC free • Machine wash max 95 °C, tumble drying • Cleaning of cover: wipe with cleaning agent and/or disinfectants • Chlorine resistant (1%) multi stretch cover (cover Stone with welded seams, 10%) 	<ul style="list-style-type: none"> • Durable bag • Sheet holder <p>SIZES</p> <p>80/85/90/100/105/120x200/210 x 10 cm</p>

CuroCell® A4 CX10

The CuroCell® A4 CX10 provides simplicity together with user comfort while aiding in the prevention and treatment of pressure ulcers/pressure injuries up to and including category 4, and unclassified pressure ulcers⁽¹⁾. It is designed for simplicity and provides features for good user comfort, reduction of shear forces and improvement of the microclimate.

CuroCell® A4 CX10 has an automatic control unit with a user-friendly interface. The mattress system regulates independently and without manual adjustment the inner pressure of the mattress to different values based on the user's weight and position. No manual action needs to be done to adjust the internal pressure of the mattress.

The control unit is equipped with the pulsating mode. With the pulsating mode, the benefits from constant low pressure (reduced maximum pressure) and the pressure-relieving effect of the dynamic mode are combined. Pulsating mode means that the pressure alternates and cells are emptied, but not completely. This gives a lower maximum pressure against the skin and slight movements in the mattress, which contributes to increased comfort and stability.




The clinical effect of the pulsating mode has been investigated in scientific studies where both tissue perfusion, as well as prevention and therapeutic effect is measured⁽⁷⁾⁽⁸⁾.

All mattresses are supplied with a four way stretch hygienic cover which meets standards for hygiene, quality and safety⁽³⁾⁽⁵⁾. All covers are manufactured from modern, recyclable materials and are vapour permeable⁽⁴⁾, which contributes to reduce the risk of skin maceration.

REFERENCES

- (1) European Pressure Ulcer Advisory Panel, National Pressure Injury Advisory Panel and Pan Pacific Pressure Injury Alliance. Prevention and Treatment of Pressure Ulcers/Injuries: Clinical Practice Guideline. The International Guideline. Emily Haesler (Ed). EPUAP/NPIAP/PPPIA: 2019
- (2): "EN ISO 11201 Acoustics - Noise emitted by machinery and equipment - Determination of emission sound pressure levels", SP 2018.
- (3) CDC (2003), Guidelines for Environmental Infection Control in Health-Care facilities, updated 2019.
- (4) SS-EN ISO 15496:2004, DIN 53122-1.
- (5) SS 876 00 20:2017, Healthcare textiles - Mattresses - Specifications and requirements.
- (6) ISO 3746:2010 "Acoustics - Determination of sound power levels and sound energy levels of noise sources using sound pressure - Survey method using an enveloping measurement surface over a reflecting plane"
- (7) Zwaenepoel, E., et al., Int Wound J, 2020 17(1).
- (8) Worsley P, Dr Bostan L., Bader D. Investigation of the biomechanical and physiological responses to prolonged lying postures during three mattress modes. Report from University of Southampton, 2018.

FEATURES CONTROL UNIT	FEATURES MATTRESS
<ul style="list-style-type: none"> • Automatic control unit which adapts individual to the user • User friendly interface • Audible and visual notifications • Three program modes: pulsating mode, alternating mode and constant low pressure • Caring mode (max-firm) • Pack&Go® function • Silent running and vibration free • Low voltage (12V power supply) • Soft friction hangers with soft tip • Air flow control; Constant temperature, good user comfort, energy reduction 	<ul style="list-style-type: none"> • Individually replaceable cells • Multifunctional inner cover • Heel function • CPR-function with transport function • Easy handling and usage • Well protected zipper <p data-bbox="853 1848 1204 1915">  Always read the instruction for use prior to usage of the product. </p> <p data-bbox="853 1937 1268 2027"> Care of Sweden and CuroCell are trademarks of Care of Sweden AB. © Care of Sweden AB, 2021. All rights reserved. Last update: 2021-06-03. </p>