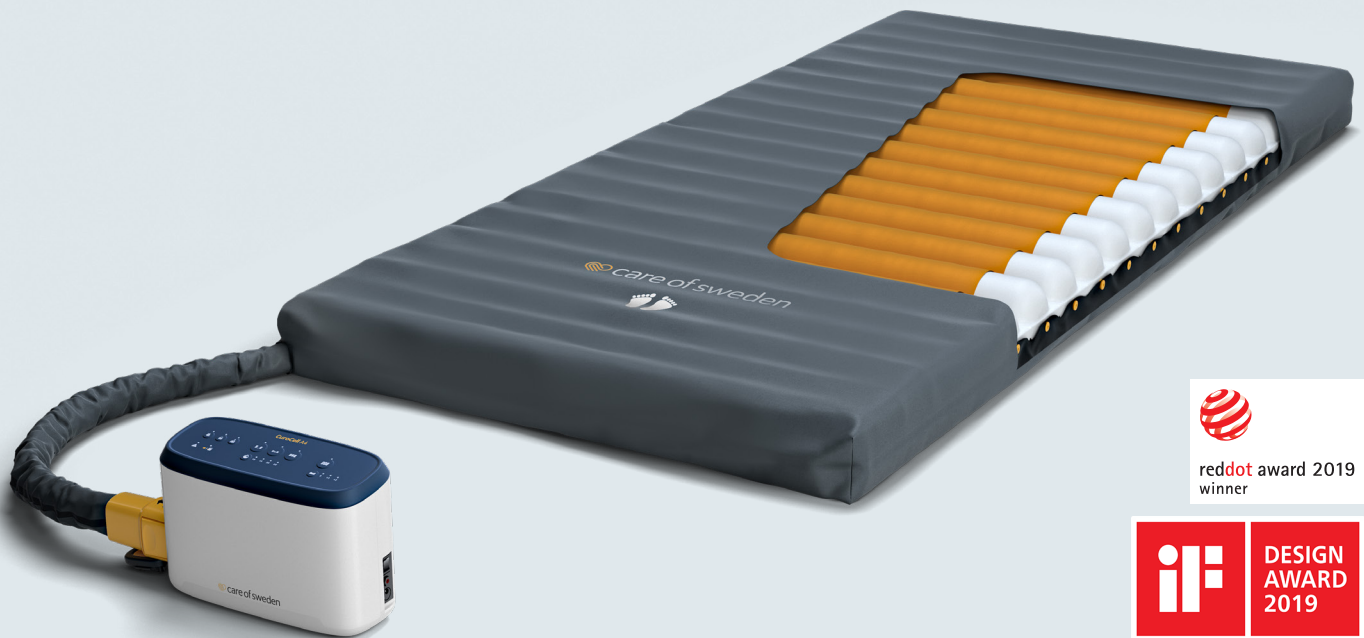


CuroCell® A4 CX10

A fully automated and flexible alternating pressure mattress overlay system



CuroCell® A4 CX10 with cover Stone

CuroCell® A4 CX10

The CuroCell® A4 CX10 provides simplicity together with user comfort while effectively aiding in the prevention and treatment of pressure ulcers/pressure injuries up to and including category 4, and unclassified pressure ulcers. It is designed for simplicity and provides features for excellent user comfort, reduction of shear forces and improvement of the microclimate.

The CuroCell® A4 CX10 mattress system includes an intelligent pump with a user-friendly interface. It is fully automatic without need for manual settings. The system identifies the user and automatically manages all settings to optimise the pressure according to the user's needs.

All mattresses are supplied with a four way stretch hygienic cover which meets standards for hygiene⁽³⁾, quality and safety. All covers are manufactured from modern, recyclable materials and are vapour permeable⁽⁴⁾, which reduce the risk of skin maceration.



OPTIONAL

- Durable bag
- Sheet holder

SIZES

80/85/90/100/105/120x200/210 x 10 cm

REFERENCES

(1) National Pressure Ulcer Advisory Panel, European Pressure Ulcer Advisory Panel and Pan Pacific Pressure Injury Alliance. Prevention and Treatment of Pressure Ulcers: Quick Reference Guide. Emily Haesler (Ed.). Cambridge Media: Osborne Park, Western Australia; 2014.

(2) "EN ISO 11201 Acoustics - Noise emitted by machinery and equipment - Determination of emission sound pressure levels", SP 2018.

(3) ISO 16603 "resistance of penetration by blood and body fluids", ISO 16604 "resistance of penetration by blood-borne pathogens", EN 14126, "performance requirements and tests methods for protective clothing against infective agents".

(4) SS-EN ISO 15496:2004, DIN 53122-1.



Always read the instruction for use prior to usage of the product.

Care of Sweden and CuroCell are trademarks of Care of Sweden AB.
© Care of Sweden AB, 2019. All rights reserved. Last update: 2019-05-28.

FEATURES MATTRESS	FACTS
<ul style="list-style-type: none"> • Individually replaceable cells • Multifunctional inner cover • Unique CPR-function with transport function • Unique design for easy handling and usage • Well protected zipper 	<ul style="list-style-type: none"> • Type: Alternating pressure mattress overlay system • Height: 10 cm • Recommended user weight: 0-200 kg • Input voltage: 100-240 V / 50-60 Hz • Sound level, pump, max.: 17 dBA⁽²⁾ • Warranty: 2 years • PVC free • Machine wash max 95 °C, tumble drying • Cleaning of cover: Wipe with cleaning agent and/or disinfectants • Chlorine resistant (1%) multi stretch cover (cover Stone with welded seams, 10%) <div data-bbox="884 1789 991 1899" style="text-align: center;"> </div> <p data-bbox="1011 1821 1238 1877">Scan QR code to watch presentation video.</p> <div data-bbox="884 1928 991 2033" style="text-align: center;"> </div> <p data-bbox="1011 1921 1366 1953">SELECT YOUR MATTRESS</p> <p data-bbox="1011 1957 1366 2013">- Visit our website for guidelines when choosing a mattress.</p> <p data-bbox="1011 2018 1410 2042">www.careofsweden.com/mattress-selector</p>
<h3>FEATURES PUMP</h3>	
<ul style="list-style-type: none"> • Fully automated pump that adapts individually • User friendly interface • Audible and visual notifications • Three program modes: Pulsating, Alternating and CLP (constant low pressure) • Caring mode (max-firm) • Pack&Go® function • Silent running and vibration free • Low voltage (12V power supply) • Soft friction hangers with extra soft tip • Air flow control; Constant temperature, increased user comfort, energy reduction 	