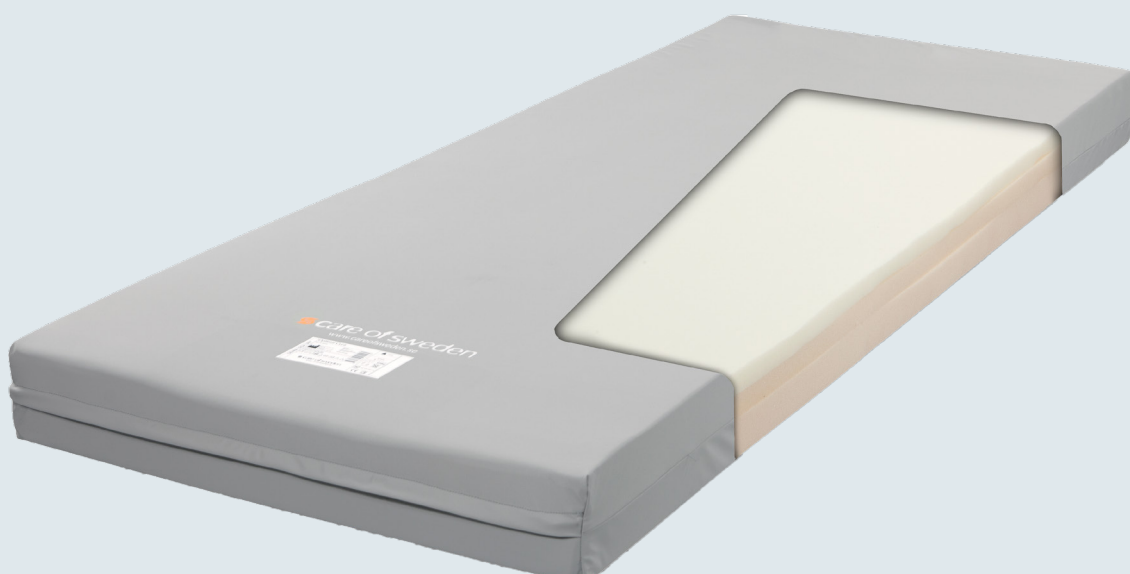


# Optimal Solett

Preventative mattress replacement for  
lightweight and sensitive patients



Optimal Solett with Olivia cover

# Optimal Solett

Optimal Solett is used as an aid in the prevention and treatment of pressure ulcers up to category 1<sup>(1)</sup>. It has been specially designed for lightweight and sensitive patients. This mattress replacement provides very good pressure redistribution.

Optimal Solett is delivered with the Olivia/Evac cover. It is equipped with a divisible, drip shield zip and feature handles for evacuation.

Care of Sweden's mattresses are supplied with a four way stretch hygienic outer cover which conforms to relevant standards for hygiene<sup>(2)</sup>, quality and safety. All covers are manufactured from modern, recyclable materials and are vapour permeable<sup>(3)</sup>, which reduce the risk of skin maceration.

## SIZES

80/85/90/105/120x200 cm and 80/85/90x210 cm.

If you need any other sizes please contact your distributor.



## AVAILABLE COVERS

### Olivia/Evac Cover

Divisible, drip shield zip and handles for evacuation on one side.

### Cover Olivia

Drip shield zip on three sides.

### Cover Nordic

Welded seams, drip shield zip on three sides and handles on one side.

### Steel/Evac Cover

2-piece cover with handles for evacuation. Welded seams and a protected zipper on all sides.

For need of non hygienic cover, please contact your distributor.

## REFERENCES

(1) Haesler, E. (Ed). National Pressure Ulcer Advisory Panel, European Pressure Ulcer Advisory Panel and Pan Pacific Pressure Injury Alliance. (2014). Prevention and Treatment of Pressure Ulcers: Clinical Guideline. Cambridge Media: Perth, Australia.

(2) ISO 16603 "resistance of penetration by blood and body fluids", ISO 16604 "resistance of penetration by blood-borne pathogens", EN 14126.

(3) SS-EN ISO 15496:2004, DIN 53122-1



Always read the instruction for use prior to usage of the product.

Care of Sweden is a trademark of Care of Sweden AB.  
© Care of Sweden AB, 2019. All rights reserved.  
Last update: 2019-08-19.

FEATURES & CHARACTERISTICS	FACTS
<p><b>Pressure</b> Highly elastic, high-quality material with effective pressure equalisation that provides good comfort.</p> <p><b>Shear forces</b> The mattress is specially designed to minimise the effects of shear forces.</p> <p><b>Moisture</b> The hygienic cover is vapour permeable<sup>(3)</sup>, which reduces the risk of skin maceration.</p> <p><b>Hygiene</b> The cover is easy to clean and has a very well documented hygienic standard<sup>(2)</sup>.</p>	<ul style="list-style-type: none"> <li>• <b>Core:</b> HR-foam 35 kg/m<sup>3</sup> + visco-elastic foam 50 kg/m<sup>3</sup></li> <li>• <b>Height:</b> 12 cm</li> <li>• <b>Function:</b> Prevention and treatment up to and including category 1<sup>(1)</sup></li> <li>• <b>Recommended user weight:</b> 0-60 kg</li> <li>• <b>Fire:</b> EN 597-1, -2</li> <li>• <b>Warranty:</b> 2 years</li> <li>• <b>Cleaning of cover:</b> Wipe with cleaning agent and/or disinfectants</li> <li>• <b>Machine wash max 95 °C, tumble drying</b></li> </ul>
	 <p><b>MATTRESS SELECTOR</b> – Guidelines when choosing a product See how to choose the right mattress at: <a href="http://www.careofsweden.com/mattress-selector">www.careofsweden.com/mattress-selector</a></p>